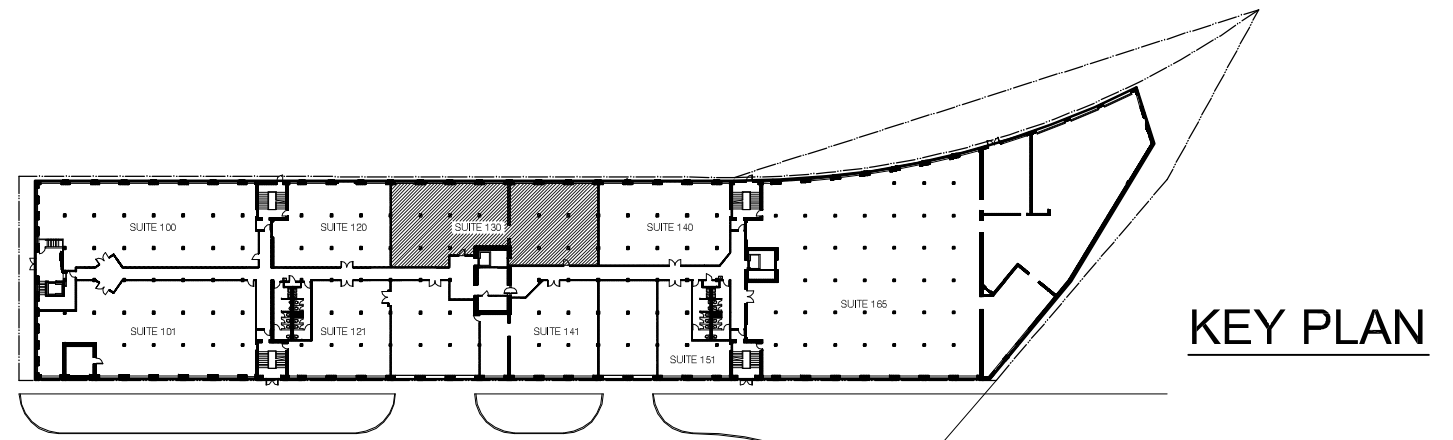


PARTIAL FLOOR PLAN - SUITE #130



KEY PLAN

BAUHS DRING SEGLIN



Architects & Planners
 One East Delaware Suite 600 Chicago, IL 60611
 T 312.649.9484 F 312.649.9508
 www.bdsmaarchitects.com

DRAWING ISSUE / REVISION LOG		
DATE:	DESCRIPTION:	NO.
00.00.08	REVIEW	

700 N. SACRAMENTO
 CHICAGO, ILLINOIS

U.S. MARSHALLS SUITE # 130 :
 PARTIAL FIRST FLOOR PLAN

08-006	SCALE: N.T.S.	DATE: 04.15.08
D.J.	SHEET: 130	